

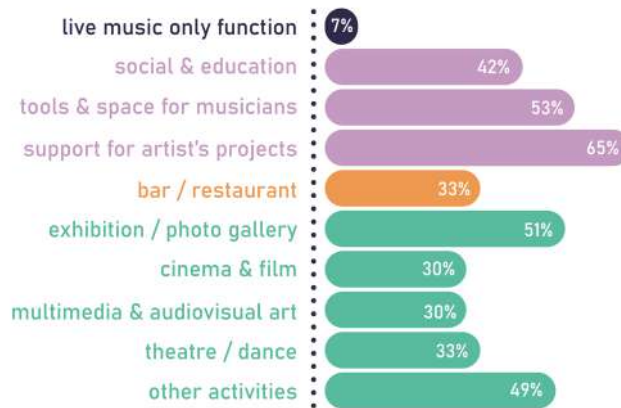


2019 OVERVIEW COURT-CIRCUIT VENUES & CLUBS (WALLONIA, BELGIUM)

These figures represent 43 live music venues and clubs in Wallonia (the French speaking part of Belgium), which are part of the association Court-Circuit.

Based on data (year 2019) of 43 Court-Circuit music venues, collected during 2020-2021.

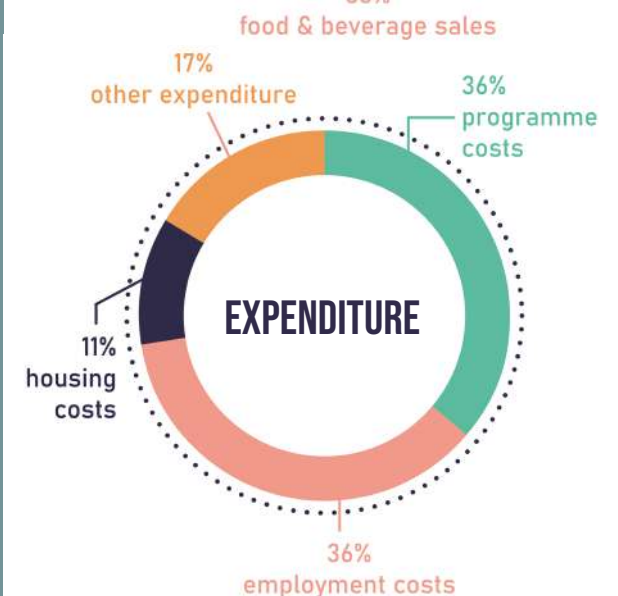
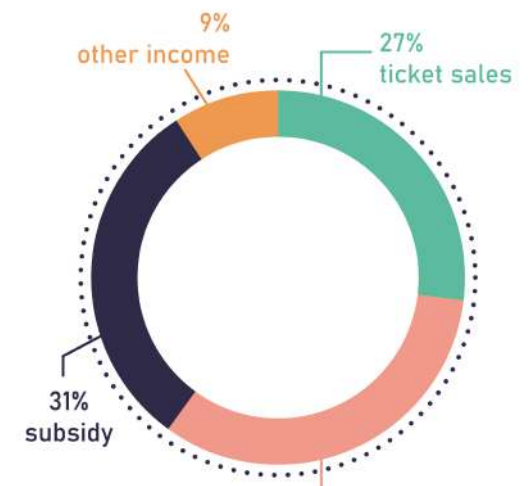
LIVE MUSIC PERFORMANCES, VISITS AND OTHER FUNCTIONS



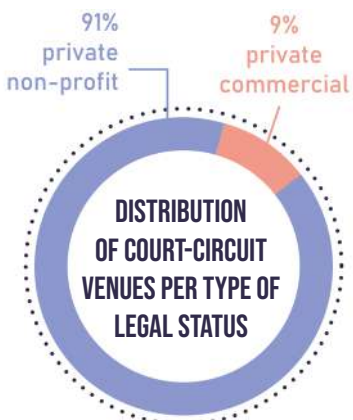
In 2019, Court-Circuit music venues had a **median audience capacity of 220**.

The music venues presented well over **4,500 artist performances**, which attracted well over **300,000 visits**.

The venues were also involved in other functions than presenting live music, such as educational, social, artistic, culinary, and multi-disciplinary activities. **74%** of all Court-Circuit music venues also **organised festivals** in 2019.



In 2019 the Court-Circuit music venues had a **total income of 6 million euro**. **Subsidy** was **25%** of the total income of all venues. The venues generated most income from **ticket sales (36%)** and **food & beverage sales (22%)**.



Almost all Court-Circuit venues are **private non-profit structures (91%)**.

WORKFORCE IN COURT-CIRCUIT LIVE MUSIC VENUES AND CLUBS



Over **1,200 workers** were involved in the Court-Circuit music venues in 2019, of which **14% paid workers** and **80% volunteers**. In total **34% of all working hours (FTE) was paid**.

35% of the workers was assigned with **gender female**.



2020 OVERVIEW COURT-CIRCUIT VENUES & CLUBS (WALLONIA, BELGIUM)

Based on compared data (year 2019+2020) of 35 Court-Circuit music venues, collected during 2020-2022.

To learn more about these venues visit www.court-circuit.be and/or contact Court-Circuit Survey coordinator David Dehard, david@court-circuit.be

IMPACT OF COVID RESTRICTIONS

The pandemic restrictions imposed by the government had an enormous impact on the possibilities and income of performing artists, (hired) workers and suppliers of live music venues in Belgium.

The government provided COVID support money to the Court-Circuit venues in 2020, which **covered 25% of the lost income** (2020 compared to 2019) of the music venues. In addition, the government and trade unions paid COVID support fund for employees' wages directly to part of the workforce of the Court-Circuit venues.

